

WHATS NEW, OCTOBER 2014

www.fleetviewonline.com

Release - October 2014

PREVIOUS VERSION: 4.1

RELEASE VERSION: 4.2

FLEETVIEW ONLINE RELEASE,

SUMMARY OF FEATURES

1. SSAS Management
2. ECDIS Integration
3. Tracking Alert Setting
4. Add New Position
5. Geofence Zone Alarms
6. Chart Display Improvements
7. Non-tracking vessels display
8. Minor Changes

WHATS NEW, OCTOBER 2014

www.fleetviewonline.com

FLEETVIEW ONLINE, NEW FEATURES

1. SSAS MANAGEMENT

This new feature allows customers to manage testing of their SSAS system for ALL vessels within a single window. From here, users can view last SSAS test performed, monitor incoming alerts & send SSAS reset commands with a single click.

The feature also has two distinctive features.

- a) Online Test Mode – Test mode can be selected on the website instead of selecting the test mode on the SSAS hardware.
- b) Automated Reset - Users can have their “remote reset” sent automatically once a SSAS test is performed.

Full procedures are documented in latest FVO user manual

Figure 1: SSAS Management – Action(testing) Page

Vessel Name	Hardware Type	Status	Last SSAS Message	Last Position	Information	Action
Inmarsat C Test	Inmarsat-C	Test Started	2 weeks ago	5 days ago	SSAS test mode started - please activate an alert button	Cancel Test
Transas v3 Test	Transas V3 ISAT	Normal	2 weeks ago	5 days ago	Please activate 'Start Test' button to begin testing the SSAS system	Start Test
Transas OA Test	Transas OA	Normal	6 days ago	Last week	Please activate 'Start Test' button to begin testing the SSAS system	Start Test

Figure 2: SSAS Management –Report Page

Vessel Name	Hardware Type	Online Test Mode	Automated Reset	Notes
Inmarsat C Test	Inmarsat-C	Disabled	not available	Please reset as per manufacturers recommendation
Transas v3 Test	Transas V3 ISAT	Disabled	Enabled	SSAS System will automatically be reset when SSAS test message is received
Transas OA Test	Transas OA	Disabled	Enabled	SSAS System will automatically be reset when SSAS test message is received

WHATS NEW, OCTOBER 2014

www.fleetviewonline.com

Figure 3: SSAS Management – Configuration Page

Actions
Report
Configuration

SSAS Testing Process

This section allows you to configure the way your SSAS system is tested. Please ensure you have read the help documentation [here](#) before you configure this section.

Online Test Mode
 OFF

Online Test Mode is disabled
 You must operate the local test/switch button on your SSAS equipment to initiate the test mode, as per the SSAS manufacturers recommended test process.

Automated Reset

Enabling this option will automatically reset all Test SSAS messages, if your hardware requires a remote reset to be delivered from FleetViewOnline terminal messenger. Please ensure you have read the help documentation [here](#) before you configure this section.

Automated Reset
 ON

Figure 4: SSAS Management – Compatibility List

Due to the operational function of the different SSAS hardware, some features are not available for specific models. Please look at the compatibility table below:

SSAS Version	Unique Identifier	Online Test Mode	Automated Reset	Notes
Transas ShipGuard v2	DST001xxxxxx	✓	×	Latching alert buttons, Local reset used
Transas ShipGuard v3	DCC007xxxxxx, DCC012xxxxxx	✓	✓	Momentary alert buttons, Remote reset used
Transas ShipGuard v4	xxxxxxxSKYxxxx	✓	✓	Momentary alert buttons, Remote reset used
Russian T400	DST001xxxxxx	✓	×	Latching alert buttons, Local reset used
Ocean Alert	DST001xxxxxx, DST002xxxxxx	✓	✓	Latching alert buttons, Remote reset used
Pole Star DSAS Mk1	DCC004xxxxxx, DCC010xxxxxx	✓	✓	Momentary alert buttons, Remote reset used
Pole Star DSAS Mk2	xxxxxxxSKYxxxx	✓	✓	Momentary alert buttons, Remote reset used
Inmarsat C	Various	✓	×	Inmarsat C includes all Furuno, JRC and Thrane & Thrane equipment

WHATS NEW, OCTOBER 2014

www.fleetviewonline.com

2. ECDIS INTEGRATION

Virtual ECDIS - FVO now supports running of virtual ECDIS.

Vessels equipped with ECDIS & Transas Gateway can subscribe to deliver all ECDIS data to FVO.

Feature can display (on-demand) virtual view of ECDIS screen to monitor near real-time ECDIS display.

Figure 1: Run virtual ECDIS from FleetView Online vessel menu

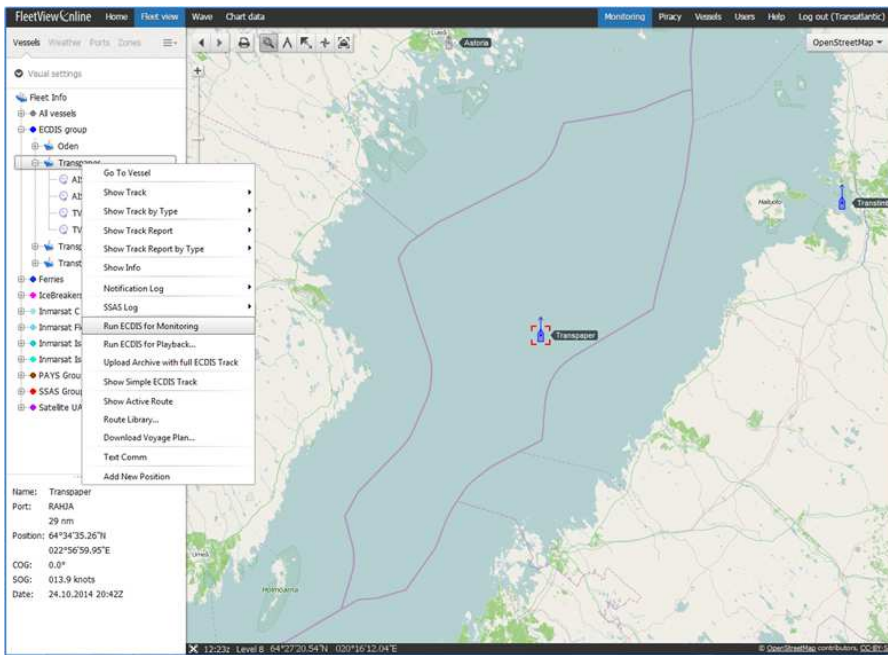
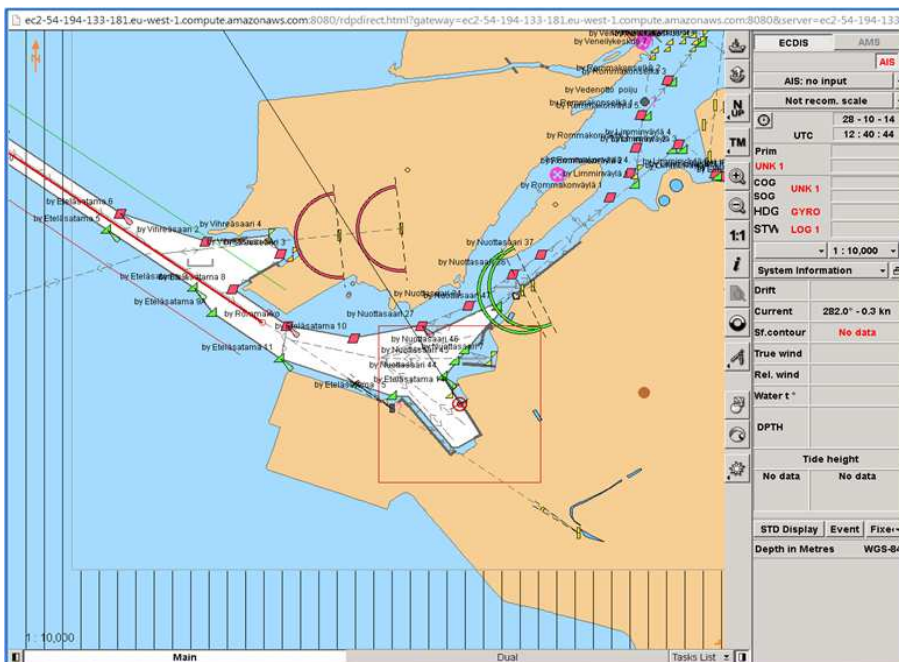


Figure 2: Virtual ECDIS display rendered from live ECDIS network data



WHATS NEW, OCTOBER 2014

www.fleetviewonline.com

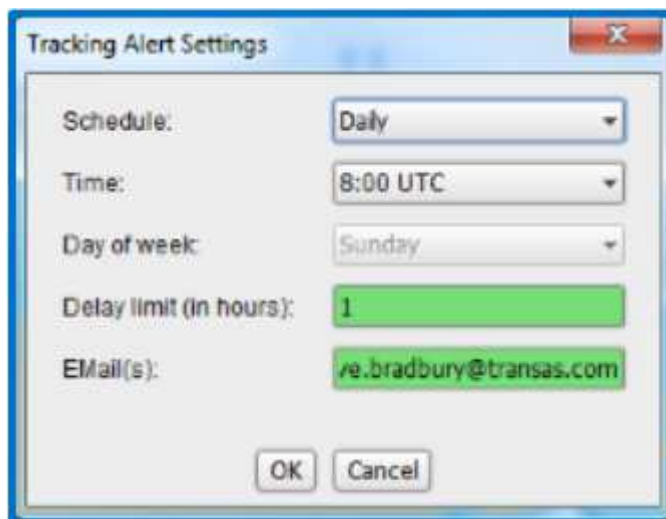
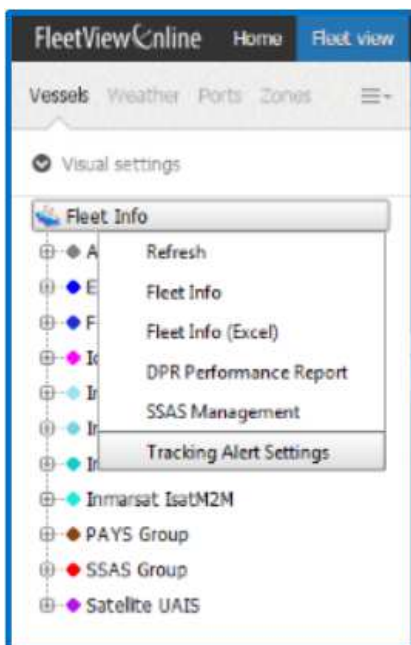
Additional ECDIS Features

- ECDIS Playback – View and playback historical ECDIS data
- ECDIS Active Route – Show current routed monitored in ECDIS
- ECDIS Route Library – Select to view any routes created from ECDIS
- Text Comm – Send text comments from FVO to ECDIS display

3. TRACKING ALERT SETTING

This feature allows the customer to configure an email alert if any vessel within their account is not tracking as per their agreed frequency.

If for example 1 daily position report is expected, you can set an email alert if a position report is not received within 24 hours. Reports can be sent at two pre-set UTC times

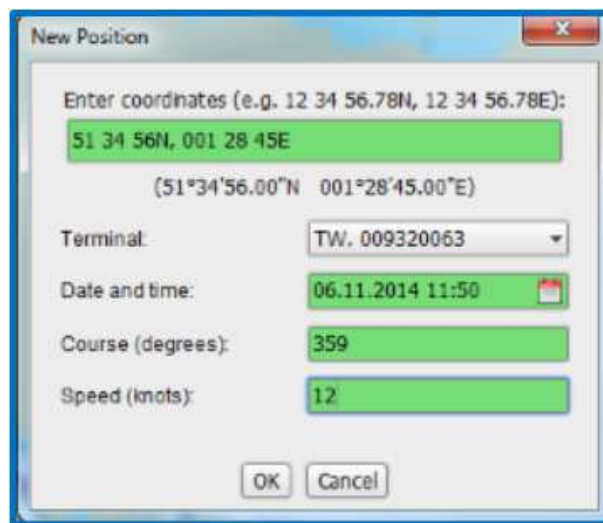
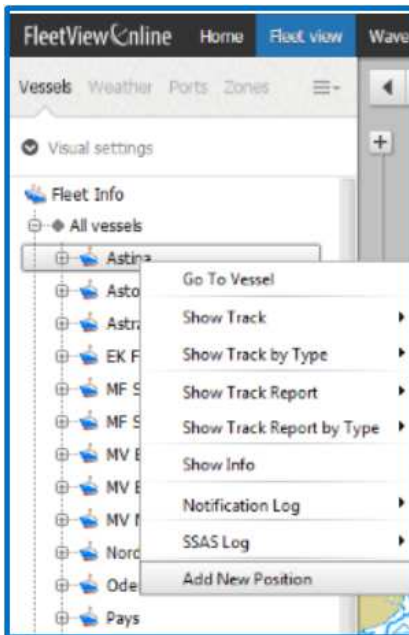


WHATS NEW, OCTOBER 2014

www.fleetviewonline.com

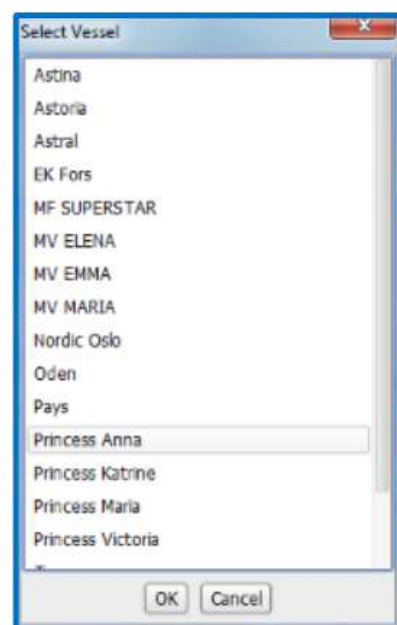
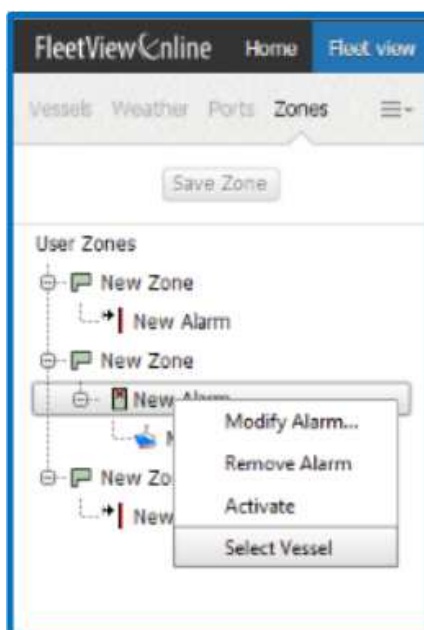
4. ADD NEW POSITION

If a position report has not been received from the tracking hardware, it is possible to manually enter a position report to complete the vessel track history.



5. GEOFENCES ZONES ALARMS – INDIVIDUAL VESSELS

You now have the ability to add geo-fence zones alarms for individual vessels, instead of all vessels.

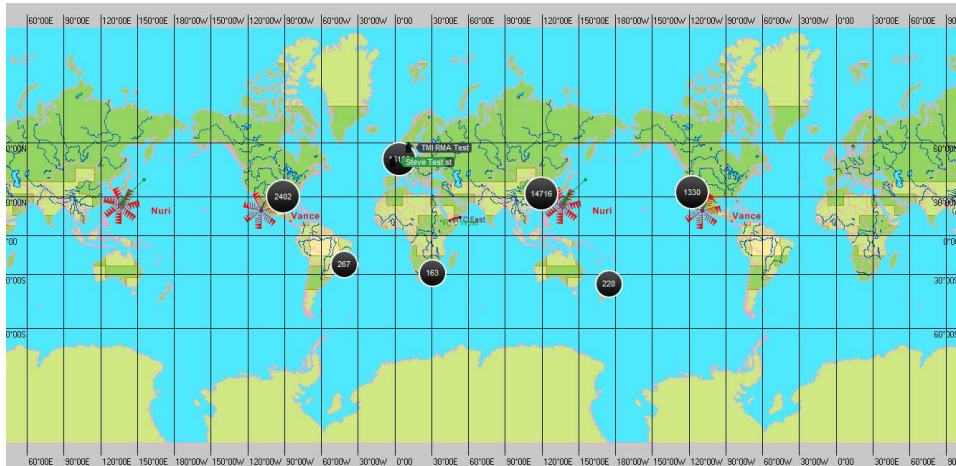


WHATS NEW, OCTOBER 2014

www.fleetviewonline.com

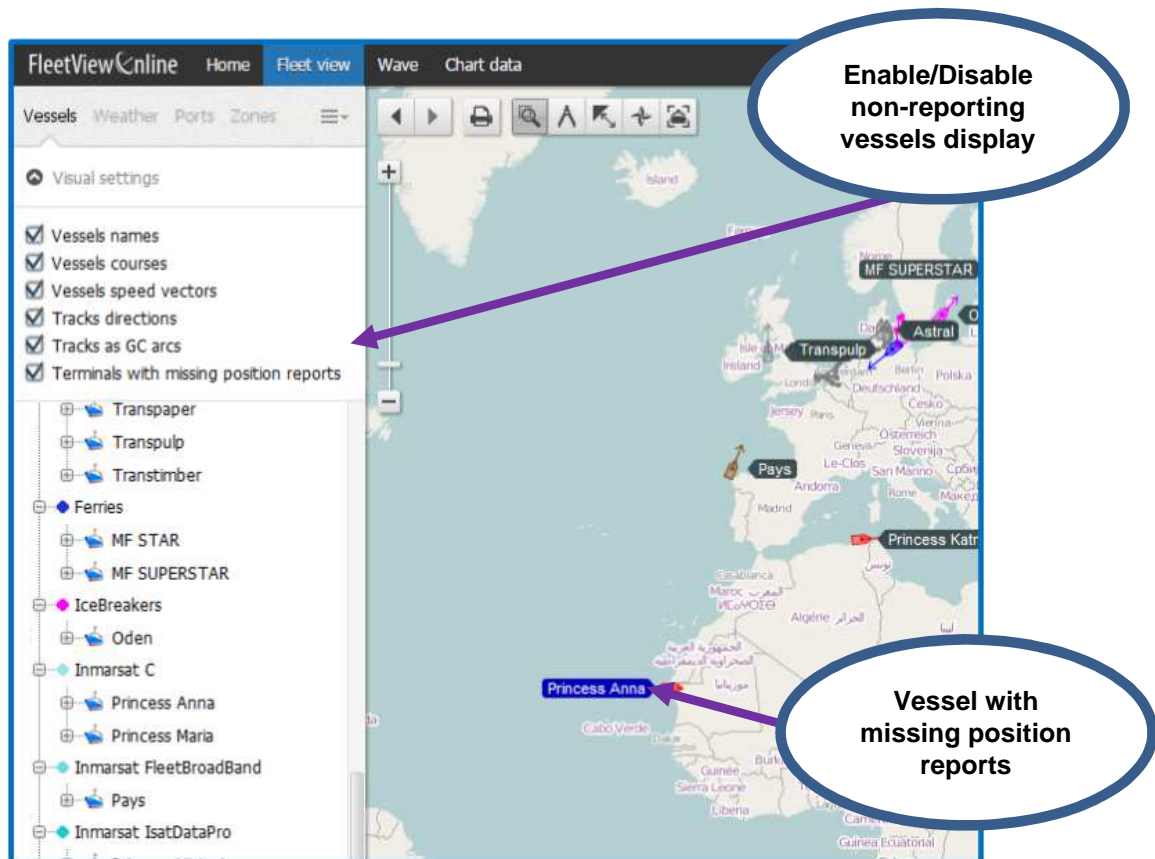
6. CHART DISPLAY IMPROVEMENTS (TRANSAS, OPENSTREET, MAPQUEST)

At larger scales, the chart view show multiple global views, instead of grey zones at the end of the chart view.



7. NON-TRACKING VESSELS DISPLAY

Vessels with missing track reports will be displayed on the chart in blue, if option is selected through visual settings.



WHATS NEW, OCTOBER 2014

www.fleetviewonline.com

8. MINOR UPDATES

- **Orange highlight terminals with SSAS Off functionality**
- **Average Speed in track report**
- **Distance to port in fleet reports**